

8 Rongotai Road Kilbirnie

High Profile Kilbirnie Villa

Locate your business to this centrally located suburban villa. Currently partitioned into 5 various office areas off the spacious entrance, with kitchen opening onto the garden, and storage areas.

Good floor area of approx 170m² gross, sitting on a large site of 395m².

Enjoy the outdoor garden area, and on-site carpark.

Facing north for Sun, with public transport on the doorstep.

Plans are underway for this property to be seismically strengthened to 100% of new building standard, providing peace of mind for you, your staff - and your customers.

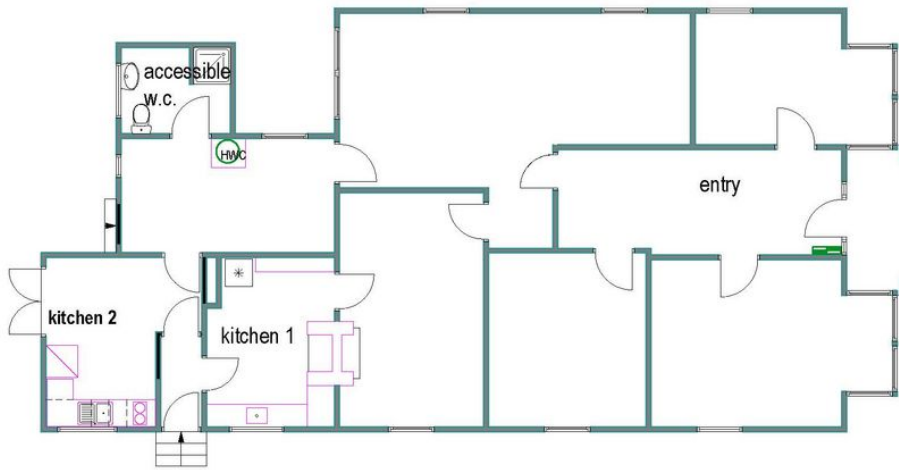
Call the SOLE AGENT for further information, or to arrange your private inspection.

Negotiation

Type : Offices
Land : 395 m²
Building Size : 170 m²

Carl Hastings

021 403 502



Floor Plan

Scale @A4 : 1:100
0 1m 2m 4m
1:100 - A4

8 Rongotai Road